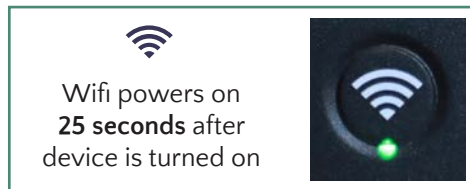
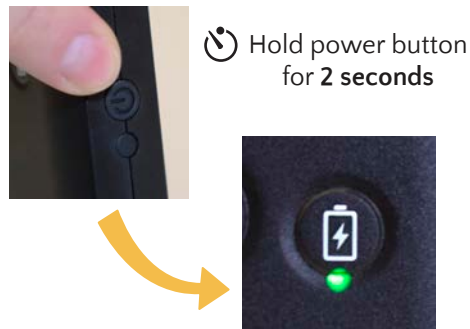


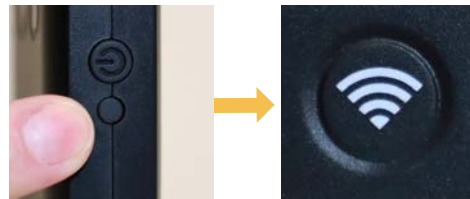


- 1 Power Button
- 2 MicroSD Lock/Unlock Button
- 3 Power Indicator – On
- 4 Battery Level Indicator
- 5 Charging Indicator
- 6 Wifi Status Indicator
- 7 Number of Wifi Users
- 8 MicroSD Copying Progress
- 9 MicroSD Lock/Unlock Indicator
- 10 Wifi Antenna Connector (Optional)
- 11 Micro USB Input (Charging Device)
- 12 MicroSD Port
- 13 USB Power Output (For Charging Other Devices)

POWER ON/OFF

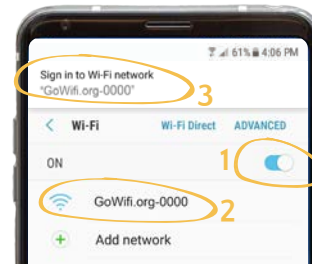


To power Wifi on/off, hold SD lock button for 2 seconds



CONNECT TO WIFI

Ensure that Wifi is on



- Connect to Wifi
- View login popup
- Open web browser
- Go to GoWifi.org

1 Wifi User



7+ Wifi Users



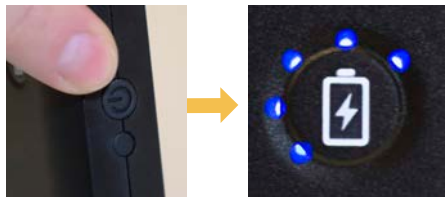
Model: RWOLSPv1
 Input: DC 5V / 1.9A
 Output: DC 5V / 500mA
 Capacity: 5200mAh / 19.24Wh

FC CE R0HS 
 MADE IN CHINA

Warning: Batteries should not be exposed to excessive heat such as sunshine or fire.

CHARGE BATTERY

Tap power button for battery level



To Charge a Phone: Plug the phone into the USB port and tap the power button.

Full Charge



7 Lights = 

Low Battery



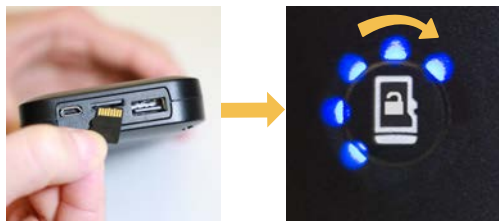
1 Light = 

Charge Time = About 5 hours
Runtime = 12 hours



MICRO SD COPYING

Lights flash to show progress



Green SD Light = Safe to remove SD card

All media copied successfully

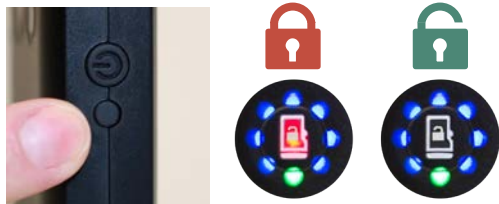


Not enough space. Only some media copied.



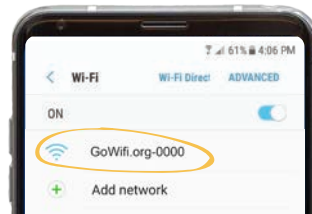
To lock or unlock SD card, quickly press SD lock button.

Button can be disabled in admin settings.



MANAGE MEDIA & SETTINGS

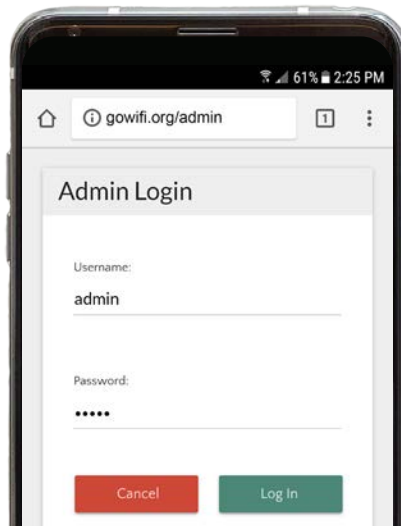
Ensure that Wifi is on



In web browser, navigate to
(By Default):

url: GoWifi.org/admin

Username: admin Password: admin



LIGHTSTREAM
POCKET

QUICK START

RENEWORLDOUTREACH
RENEWOUTREACH.ORG

